

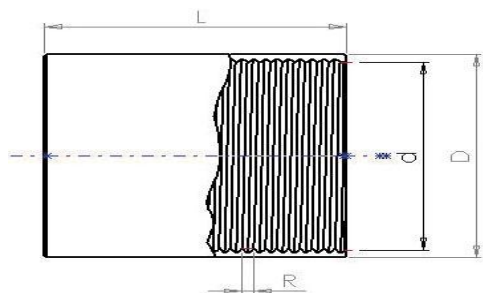


# PRODUCT SPECIFICATION

## METRIC THREADED SLEEVE MTMR

TYPE	COMPOSITION	Ø OUT. mm	TOLER. mm	LENGTH mm	TOLER. mm	THREAD IN ACCORDING TO UNE-EN 60423	UNITS/ BOX	COLOUR
AISCAN-MTMR-16	STEEL	18,5	+0,2	30	+2 -1	M16X1,5	50	ZINC
AISCAN-MTMR-20	“	22,5	+0,2	35	+2 -1	M20X1,5	50	“
AISCAN-MTMR-25	“	27,5	+0,2	40	+2 -1	M25X1,5	40	“
AISCAN-MTMR-32	“	34,5	+0,2	43	+2 -1	M32X1,5	40	“
AISCAN-MTMR-40	“	42,5	+0,2	43	+2 -1	M40X1,5	25	“
AISCAN-MTMR-50	“	52,5	+0,2	52	+2 -1	M50X1,5	10	“
AISCAN-MTMR-63	“	65,5	+0,2	63	+2 -1	M63X1,5	9	“
EDITION DATE	EDITION NUMBER	CARD NUMBER						
2009/02	2	EP-MTMR						

- **THESE ACCESSORIES ARE USED IN THREADABLES METRICS TUBES IN ACCORDING TO UNE-EN 60423**



### SPECIFICATIONS ACCORDING TO STANDARD UNE-EN 61386-21

- CODE: 555711542010
- OPERATING TEMPERATURE RANGE: -45 + 400°C
- CRUSHING STRENGTH: > 4000N
- IMPACT RESISTANCE: >20J AT -45°C
- CORROSION RESISTANCE: MEDIUM
- FLAME PROPAGATE: NO
- MATERIAL: COLD ROLLED STEEL WITH LOW CONTENT CARBON. QUALITY TYPE DC03, IN ACCORDING TO STANDARD EN-10130. ELECTRO-GALVANIZED FINISH.

**- NO CONTROLLED COPY. THIS INFORMATION COULD BE MODIFIED BY AISCAN WHITOUT PREVIOUS ADVERTISMENT.-**